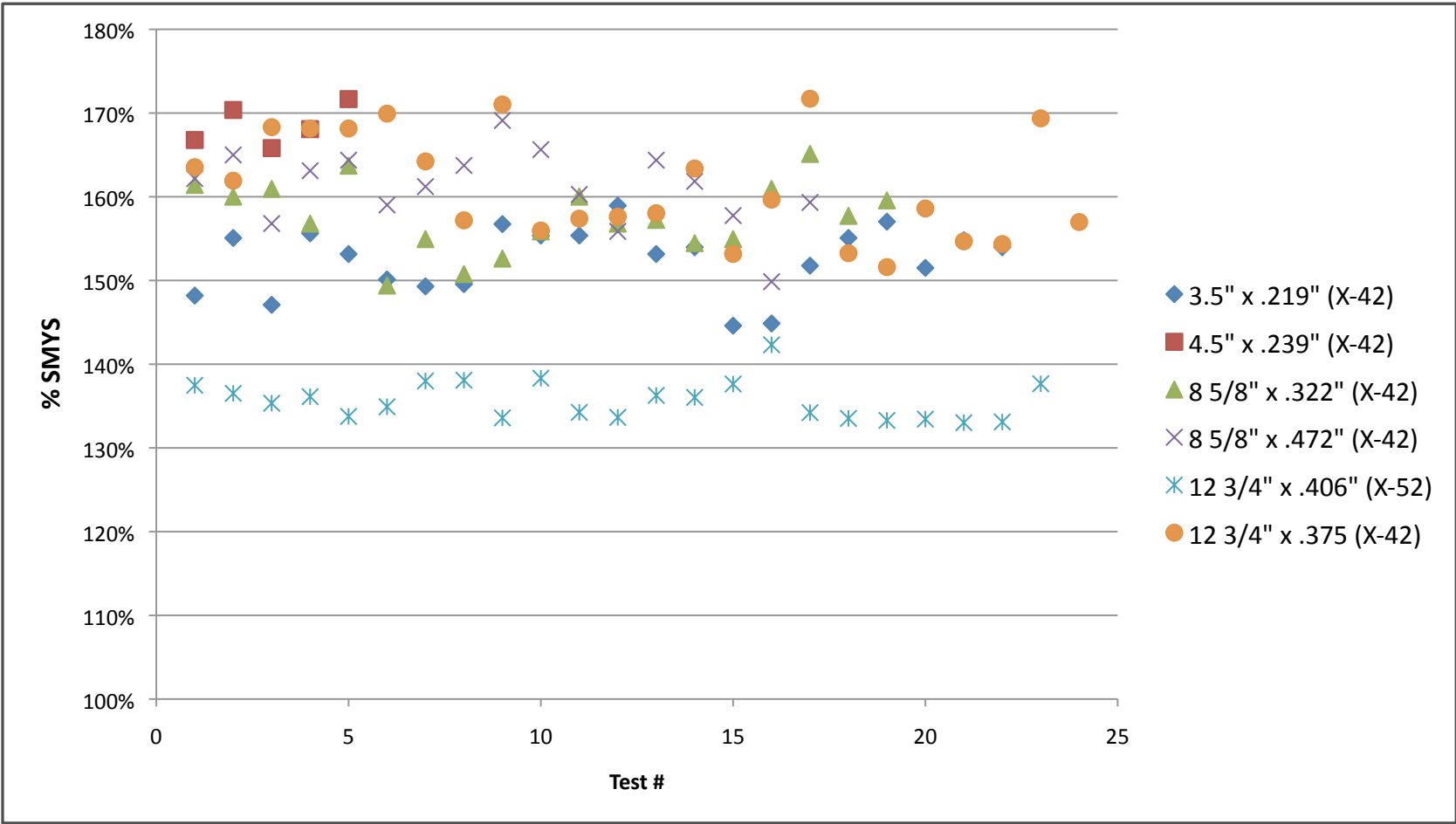
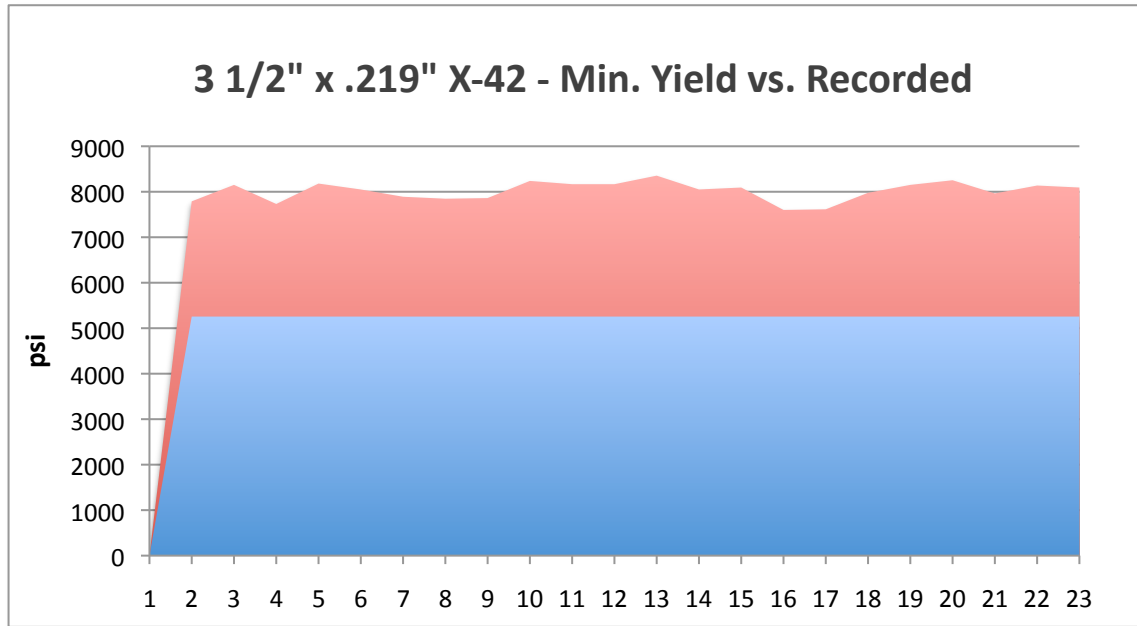


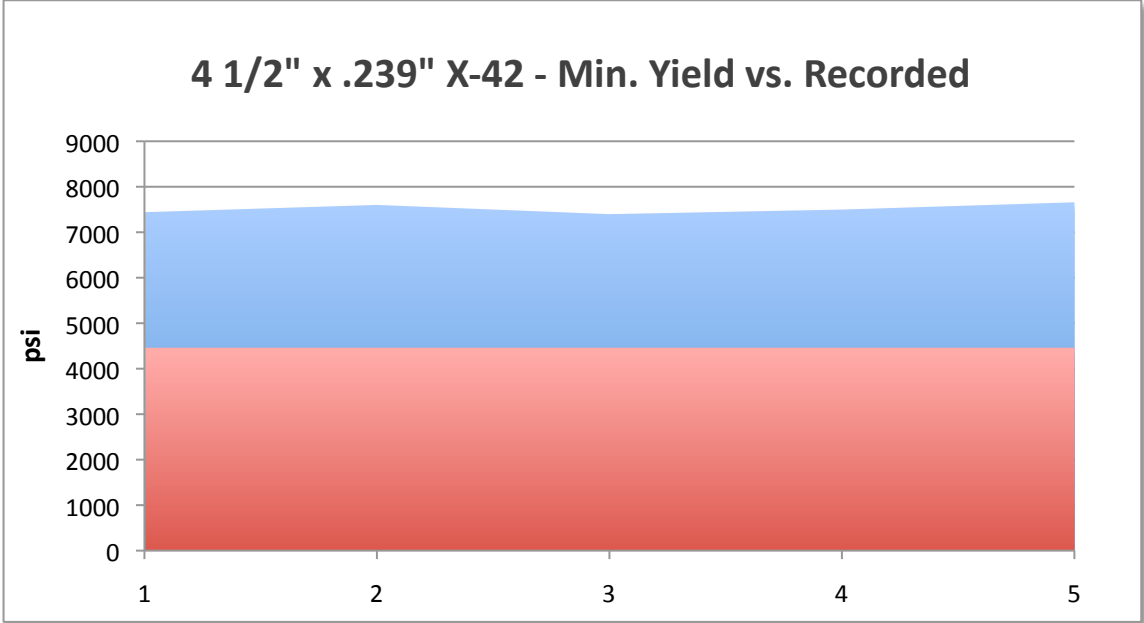
Zap-Lok Hydrostatic Testing Analysis
110 Independent tests - various sizes





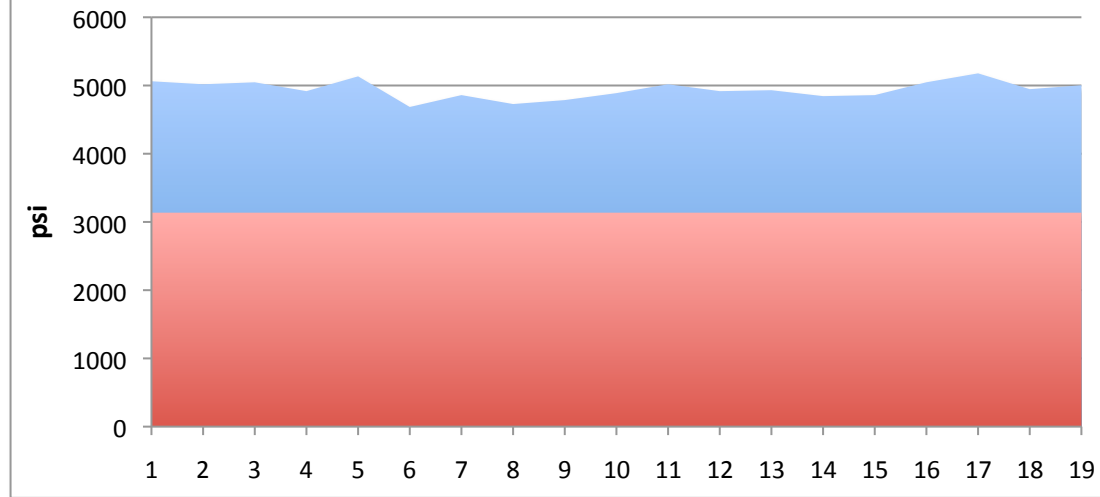
Test #	Heat #	Min. Yield (psi)	Recorded (psi)	% SMYS
--------	--------	------------------	----------------	--------

1	16435	5256	7789	148%
2	16435	5256	8151	155%
3	16435	5256	7731	147%
4	16433	5256	8180	156%
5	16433	5256	8050	153%
6	41683	5256	7890	150%
7	41683	5256	7847	149%
8	41683	5256	7861	150%
9	35647	5256	8238	157%
10	35647	5256	8166	155%
11	16438	5256	8166	155%
12	16438	5256	8354	159%
13	935922	5256	8050	153%
14	935922	5256	8093	154%
15	935922	5256	7600	145%
16	935109	5256	7614	145%
17	935109	5256	7977	152%
18	835329	5256	8151	155%
19	835329	5256	8253	157%
20	835329	5256	7963	152%
21	35647	5256	8137	155%
22	35647	5256	8093	154%



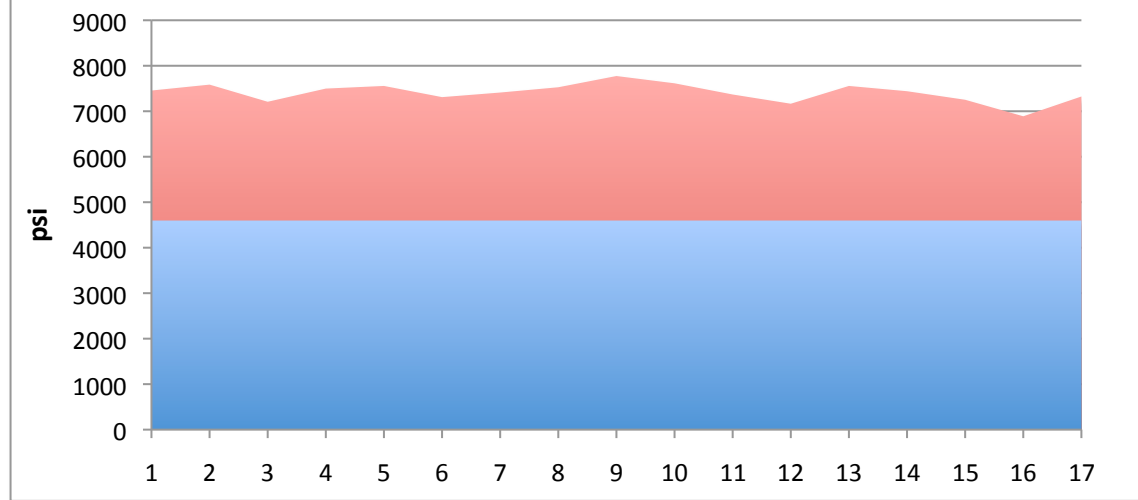
Test #	Heat #	Min. Yield (psi)	Recorded (psi)	% SMYS
1	35649	4461	7440	167%
2	35649	4461	7600	170%
3	35649	4461	7397	166%
4	16438	4461	7498	168%
5	16438	4461	7658	172%

8 5/8" x .322" X-42 - Min. Yield vs. Recorded



Test #	Heat #	Min. Yield (psi)	Recorded (psi)	% SMYS
1	16434	3136	5062	161%
2	16434	3136	5018	160%
3	16434	3136	5047	161%
4	16436	3136	4917	157%
5	16436	3136	5134	164%
6	35648	3136	4685	149%
7	35648	3136	4859	155%
8	35648	3136	4728	151%
9	16438	3136	4786	153%
10	16438	3136	4888	156%
11	35647	3136	5018	160%
12	35647	3136	4917	157%
13	35647	3136	4931	157%
14	35645	3136	4844	154%
15	35645	3136	4859	155%
16	35646	3136	5047	161%
17	35646	3136	5178	165%
18	35646	3136	4946	158%
19	16433	3136	5004	160%

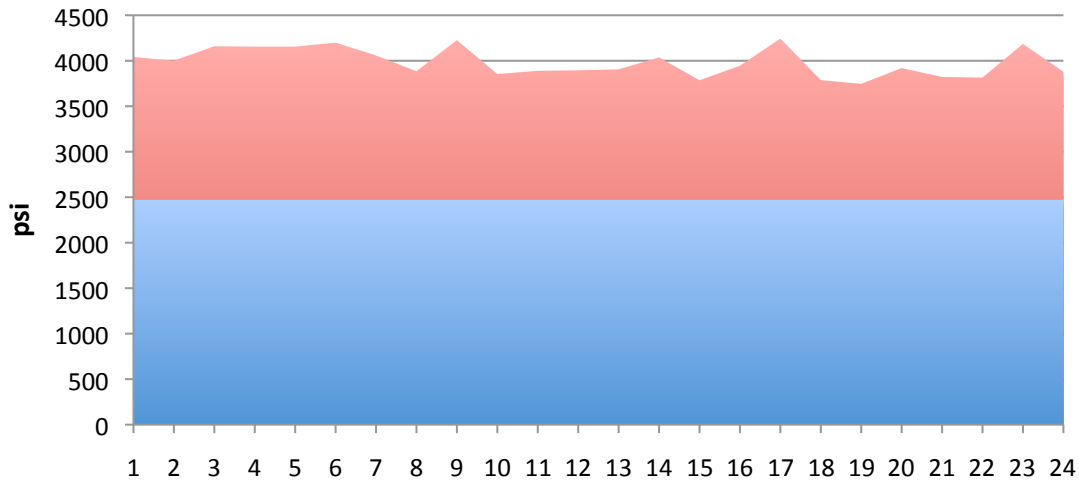
8 5/8" x .472" X-42 - Min. Yield vs. Recorded



Test #	Heat #	Min. Yield (psi)	Recorded (psi)	% SMYS
--------	--------	------------------	----------------	--------

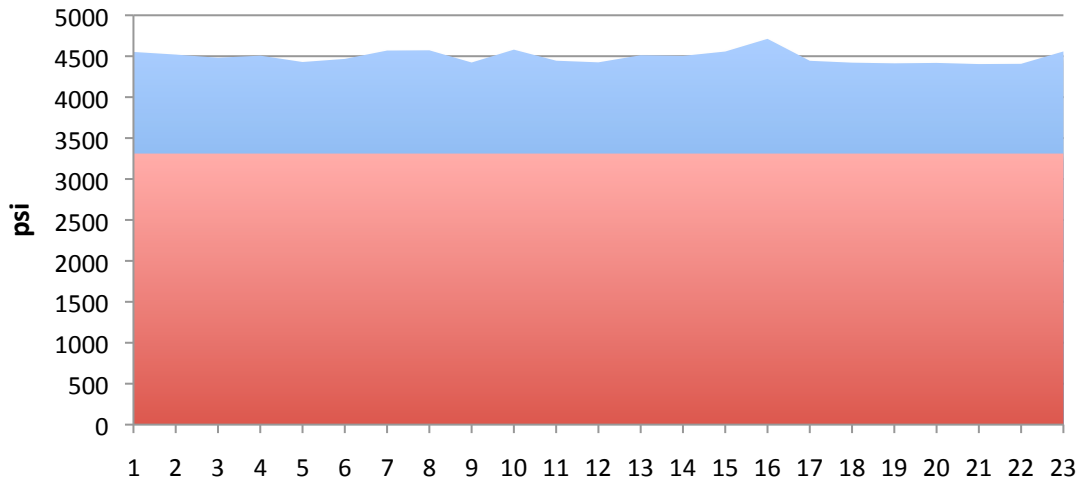
1	16438	4597	7455	162%
2	16438	4597	7585	165%
3	16437	4597	7208	157%
4	16437	4597	7498	163%
5	35649	4597	7556	164%
6	35649	4597	7310	159%
7	35649	4597	7411	161%
8	34475	4597	7527	164%
9	34475	4597	7774	169%
10	34475	4597	7614	166%
11	35648	4597	7368	160%
12	35648	4597	7165	156%
13	41683	4597	7556	164%
14	41683	4597	7440	162%
15	41683	4597	7252	158%
16	35649	4597	6889	150%
17	35649	4597	7324	159%

12 3/4" x .375" X-42 - Min. Yield vs. Recorded



Test #	Heat #	Min. Yield (psi)	Recorded (psi)	% SMYS
1	SQ46865	2471	4041	164%
2	SQ46865	2471	4001	162%
3	SQ46865	2471	4159	168%
4	SQ46643	2471	4155	168%
5	SQ46643	2471	4155	168%
6	SQ46643	2471	4199	170%
7	SB10832	2471	4058	164%
8	SB10832	2471	3884	157%
9	SB10832	2471	4226	171%
10	SQ46640	2471	3854	156%
11	SB12495	2471	3889	157%
12	SB12495	2471	3895	158%
13	SB12495	2471	3905	158%
14	SQ46602	2471	4037	163%
15	SQ46867	2471	3785	153%
16	SQ46867	2471	3945	160%
17	SQ46867	2471	4243	172%
18	SQ46609	2471	3787	153%
19	SQ46609	2471	3746	152%
20	SQ46609	2471	3919	159%
21	SB12503	2471	3822	155%
22	SQ39574	2471	3814	154%
23	SQ46305	2471	4185	169%
24	SQ46305	2471	3879	157%

12 3/4" x .406" X-52 - Min. Yield vs. Recorded



Test #	Heat #	Min. Yield (psi)	Recorded (psi)	% SMYS
--------	--------	------------------	----------------	--------

1	16435	3311	4552	137%
2	16435	3311	4520	137%
3	16435	3311	4481	135%
4	16433	3311	4507	136%
5	41683	3311	4429	134%
6	35647	3311	4467	135%
7	35647	3311	4569	138%
8	16438	3311	4572	138%
9	16438	3311	4423	134%
10	935922	3311	4580	138%
11	935922	3311	4445	134%
12	935922	3311	4425	134%
13	935109	3311	4512	136%
14	935109	3311	4504	136%
15	835329	3311	4557	138%
16	835329	3311	4712	142%
17	835329	3311	4444	134%
18	35647	3311	4421	134%
19	35647	3311	4413	133%
20	297771	3311	4418	133%
21	287882	3311	4404	133%
22	287882	3311	4407	133%
23	287775	3311	4558	138%